

# Summit Estates

# Summit Estates

Summit Estates is coming to beautiful La Mesa, California in 2023. This exclusive new home community by Cornerstone Communities, is gated and will feature 30 luxury single-story and two-story estate homes, each with their own large private, fenced backyard.

The three modern floorplans will offer stylish interiors with up to 6 bedrooms and 5.5 bathrooms. Each home features a multi gen suite perfect for extended family, complete with their own entrance.

Enjoy open-style floorplans ranging from 2,473 to 3,091 square feet of living and loaded with upscale finishes and designs. Many of these homes offer an amazing premium view sitting on a crest.

Each home will include homeowner owned solar panels to provide long term savings and a 2- or 3-car garage outfitted with the required electrical service for car charging.



# Summit Estates

- RESIDENCE 1
- RESIDENCE 2
- RESIDENCE 3



Phase	Lot Numbers
One	1 - 6
Two	7 - 9, 27 - 30
Three	10 - 13, 25 - 26
Four	14 - 15, 21 - 24
Five	16 - 20



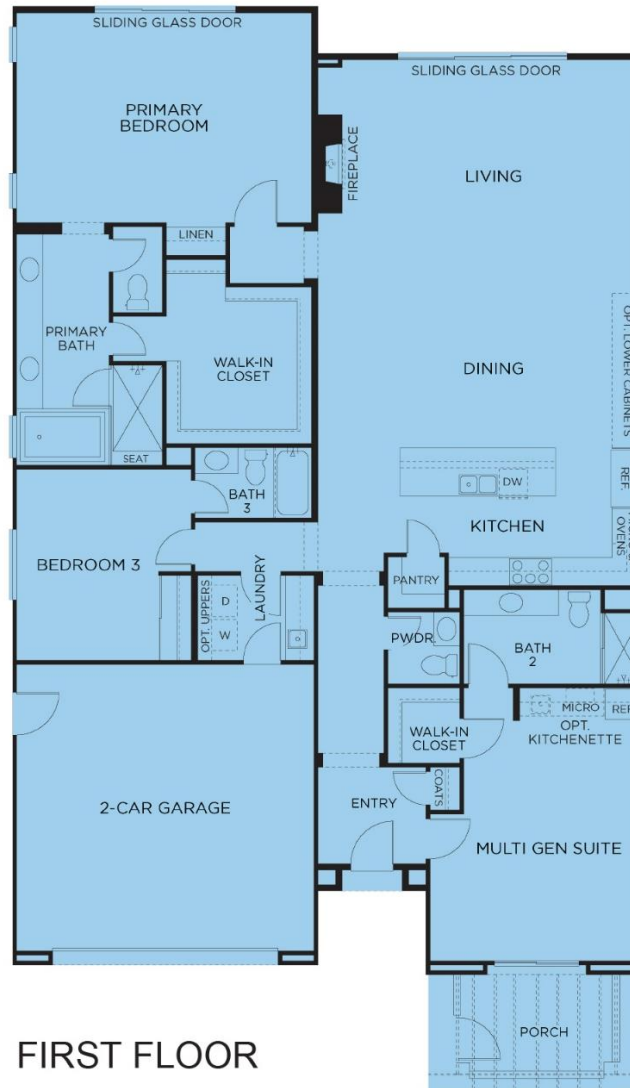


- Single-Story
- 2,473 Square Feet
- 3 Beds & 3.5 Baths
- Homeowner Owned Solar
- Car Charger Ready Wiring
- Private Fenced Yard





# Residence 1



FIRST FLOOR

All images are artistic renderings of Summit Estates They are conceptual drawings based on current development plans, which are subject to change without notice. All artwork represented here is the sole property of Cornerstone Communities. Any reproduction or any other use without the written permission of Cornerstone Communities, LLC is strictly prohibited. Prices, plans, dimensions, features, specifications, materials and availability of homes or communities are subject to change without notice or obligation. The Cove Realty Group CA DRE #01451200

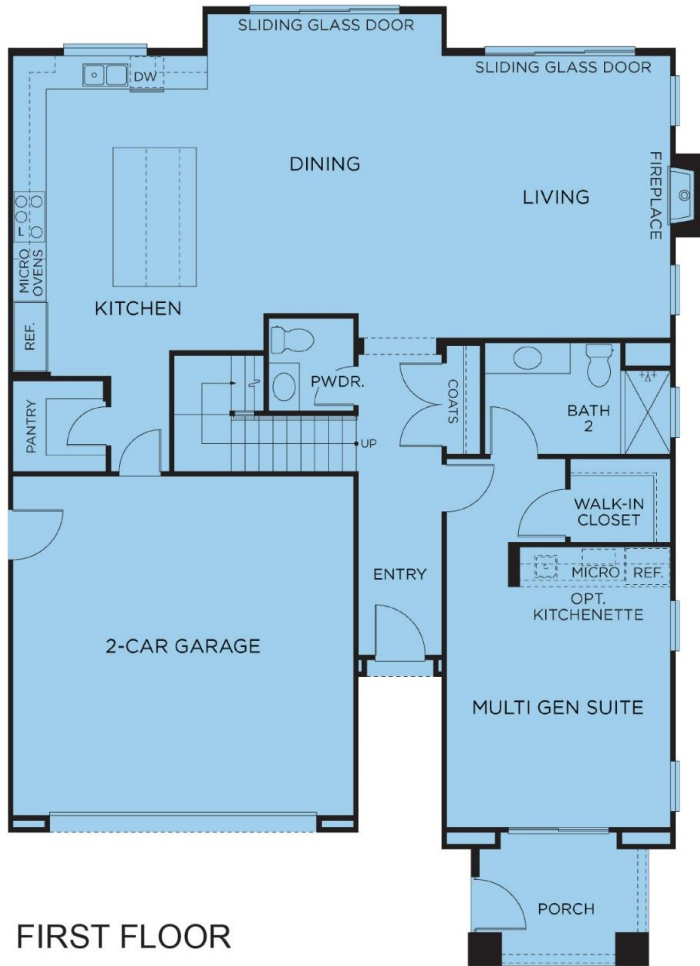




- 3,091 to 3,105 Square Feet
- 5 Bedrooms
- 4.5 Bathrooms
- Homeowner Owned Solar
- Car Charger Ready Wiring
- Private Fenced Yard



# Residence 2



All images are artistic renderings of Summit Estates They are conceptual drawings based on current development plans, which are subject to change without notice. All artwork represented here is the sole property of Cornerstone Communities. Any reproduction or any other use without the written permission of Cornerstone Communities, LLC is strictly prohibited. Prices, plans, dimensions, features, specifications, materials and availability of homes or communities are subject to change without notice or obligation. The Cove Realty Group CA DRE #01451200





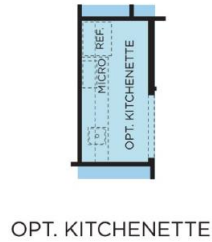
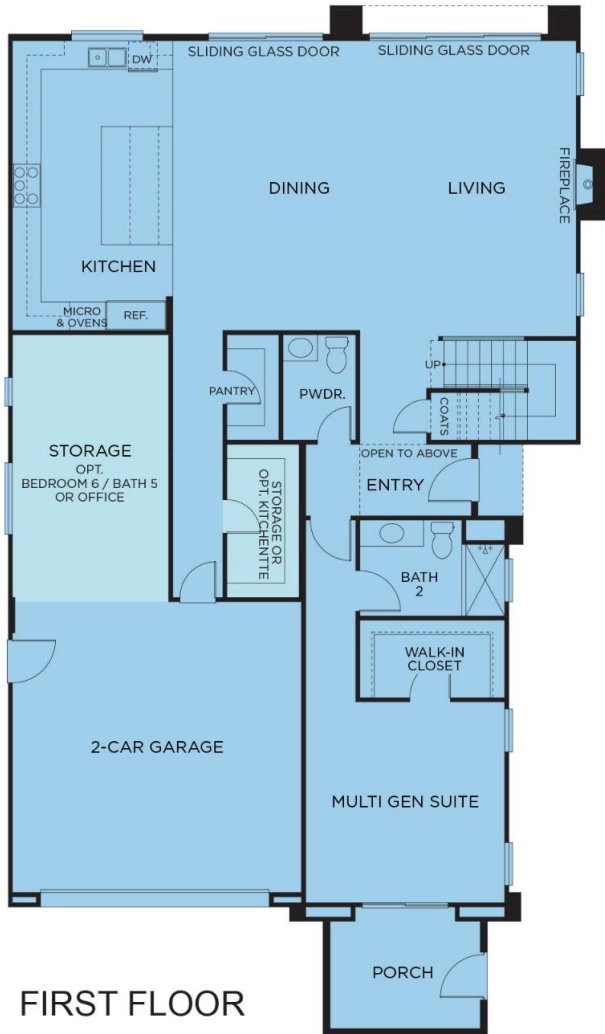


- 3,677 to 3,901 Square Feet
- Up to 6 Beds & 5.5 Baths
- Homeowner Owned Solar
- 2- or 3-Car Garage
- Car Charger Ready Wiring
- Private Fenced Yard





# Residence 3



All images are artistic renderings of Summit Estates They are conceptual drawings based on current development plans, which are subject to change without notice. All artwork represented here is the sole property of Cornerstone Communities. Any reproduction or any other use without the written permission of Cornerstone Communities, LLC is strictly prohibited. Prices, plans, dimensions, features, specifications, materials and availability of homes or communities are subject to change without notice or obligation. The Cove Realty Group CA DRE #01451200



# Summit Estates

7705 La Mesa Summit Drive, La Mesa CA 91941

619.363.9513

[CornerstoneCommunities.com](http://CornerstoneCommunities.com)

The Cove Realty Group CA DRE #01451200

